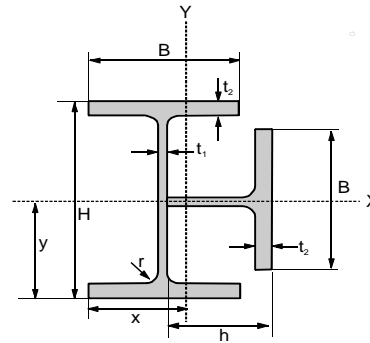
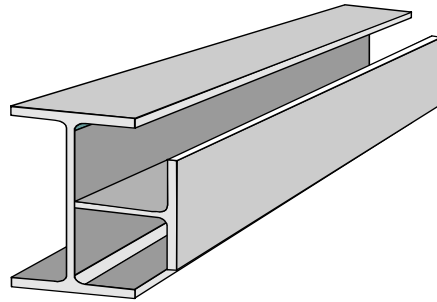


Queen Cross

Product Specifications



Metric Size

Standard Sectional Dimension							Informative Reference								
Sectional Index	Depth of Section	Width of Section	Thickness		Corner Radius	Sectional Area	Unit Weight	Center of Gravity		Geometrical Moment of Inertia		Radius of Gyration of Area		Modulus of Section	
			Web	Flange				x	y	I _x	I _y	i _x	i _y	Z _x	Z _y
mm	H	B	t ₁	t ₂	r	A	kg/m	mm	mm	cm ⁴	cm ⁴	cm	cm	cm ³	cm ³
Q 150 x 75	150	75	5	7	8	26.78	21	57.3	75	691	310	5.08	3.4	92.1	53.99
Q 200 x 100	200	100	5.5	8	11	40.74	32	76.6	100	1,907	848	6.84	4.56	190.7	110.72
Q 198 x 99	198	99	4.5	7	11	34.77	27.3	76.1	99	1,637	722	6.86	4.56	165.3	94.86
Q 250 x 125	250	125	6	9	12	56.49	44.4	95.9	125	4,197	1,844	6.82	5.71	335.8	192.34
Q 248 x 124	248	124	5	8	12	49.02	38.5	95.4	124	3,670	1,599	8.65	5.71	296.0	167.62
Q 300 x 150	300	150	6.5	9	13	70.17	55.1	114.7	150	7,464	3,260	10.31	6.82	497.6	284.16
Q 298 x 149	298	149	5.5	8	13	61.2	48.1	114.2	149	6,545	2,842	10.34	6.81	439.3	248.76
Q 350 x 175	350	175	7	11	14	94.71	74.4	134.5	175	14,092	6,096	12.2	8.02	805.3	453.30
Q 346 x 174	346	174	6	9	14	79.02	62.1	133.3	173	11,496	4,978	12.07	7.94	664.5	373.37
Q 400 x 200	400	200	8	13	16	126.18	99.1	153.9	200	24,570	10,661	13.95	9.19	1,228.4	692.79
Q 396 x 199	396	199	7	11	16	108.24	85	152.8	198	20,725	8,984	13.84	9.11	1,047.2	588.07
Q 450 x 200	450	200	9	14	18	145.14	114	159.3	225	34,436	15,472	15.4	10.02	1,530.5	914.48
Q 500 x 200	500	200	10	16	20	171.3	134.5	165.2	250	48,871	20,386	16.89	10.91	1,954.8	1,234.37
Q 600 x 200	600	200	11	17	22	201.6	158.3	175.7	300	78,739	32,097	19.76	12.62	2,624.6	1,826.74
Q 588 x 300	588	300	12	20	28	288.75	226.7	229.7	294	122,509	53,713	20.6	13.64	4,167.0	2,338.03
Q 700 x 300	700	300	13	24	28	353.25	277.4	243.7	350	206,406	86,629	24.17	15.66	5,897.1	3,555.30
Q 800 x 300	800	300	14	26	28	401.1	315	255.1	400	297,859	121,518	27.25	17.41	7,446.3	4,763.91

Note :

- $H = H/2$ = Height of T-Beam.
- Material Specification refer to Wide Flange Shape.
- Tolerance $H = \pm 2\text{mm}$.
- Welded specification as per AWS E-6013.

